

# WEDDINGS



THORPE MANOR  
OXFORDSHIRE



Plan your perfect wedding at Thorpe Manor.

A grand Georgian house situated on the edge of its beautiful 200 acre estate, with 14 en suite bedrooms for close confidants to stay and large rooms with classic features for intimate and elegant celebrations.

Thorpe Manor is the place for luxurious, convivial and stylish weddings.















# The House



## ACCOMMODATION

14 bedrooms and 13 bathrooms in which to relax and unwind.

From cosy attic rooms under the eaves to generously spaced masters, all complete with free standing baths and rainforest showers. You and your guests will collapse into magnificent beds and wake to tranquil views.

Each bedroom is equipped with modern comforts, such as Nespresso machines, large robes, slippers and 100% Egyptian cotton bed linen.

## THE BRIDAL SUITE

The idyllic bridal suite, with its vast bed, one-of-a-kind antique mosaic bath, grand dressing room and views over the gardens, is what wedding dreams are made of.

## SERVICE AND HOSPITALITY

You and your guests will be looked after from the moment you arrive to ensure your stay is effortless. Everything is taken care of from lighting fires, breakfast feasts, housekeeping and bedroom turndown service.



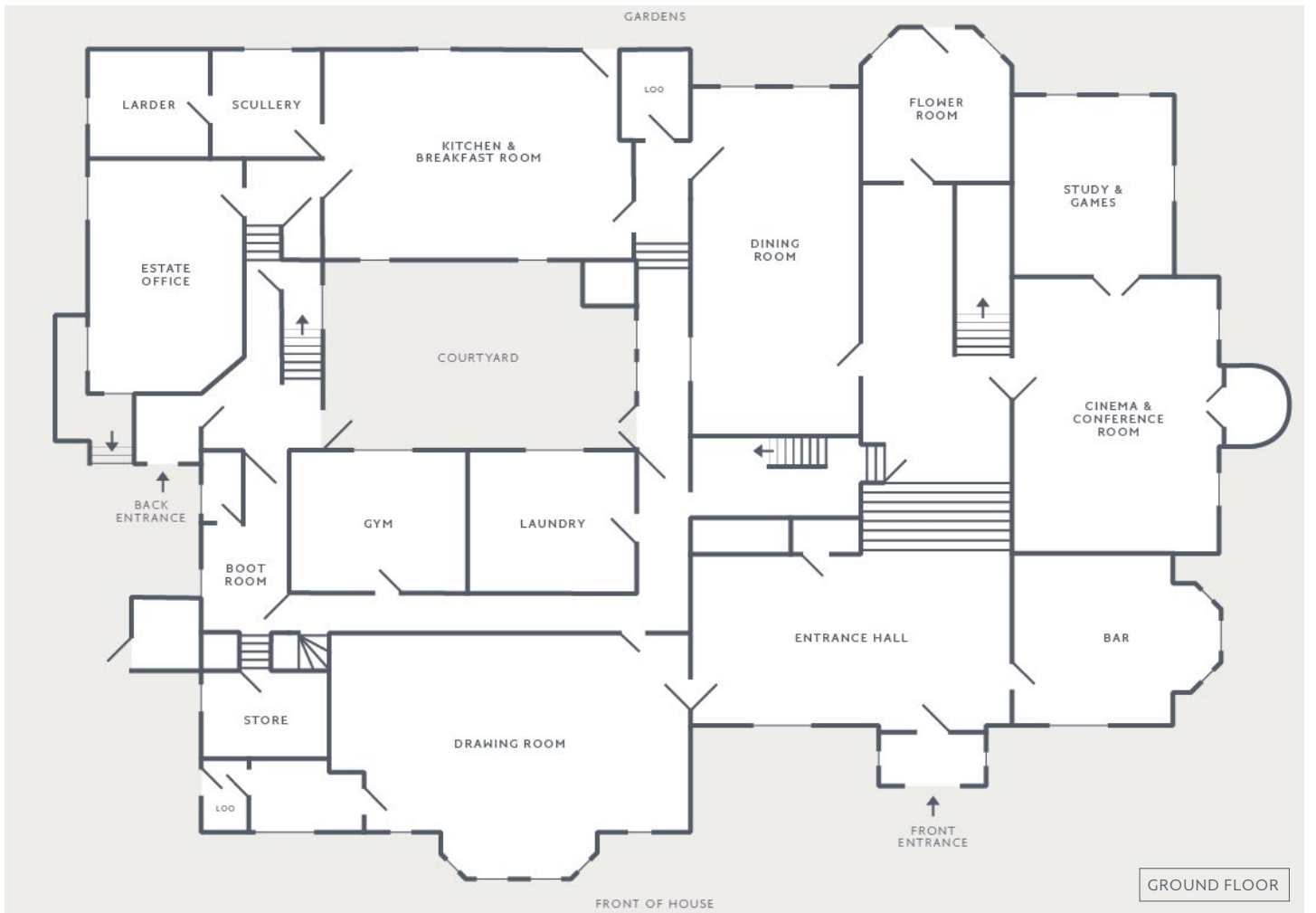




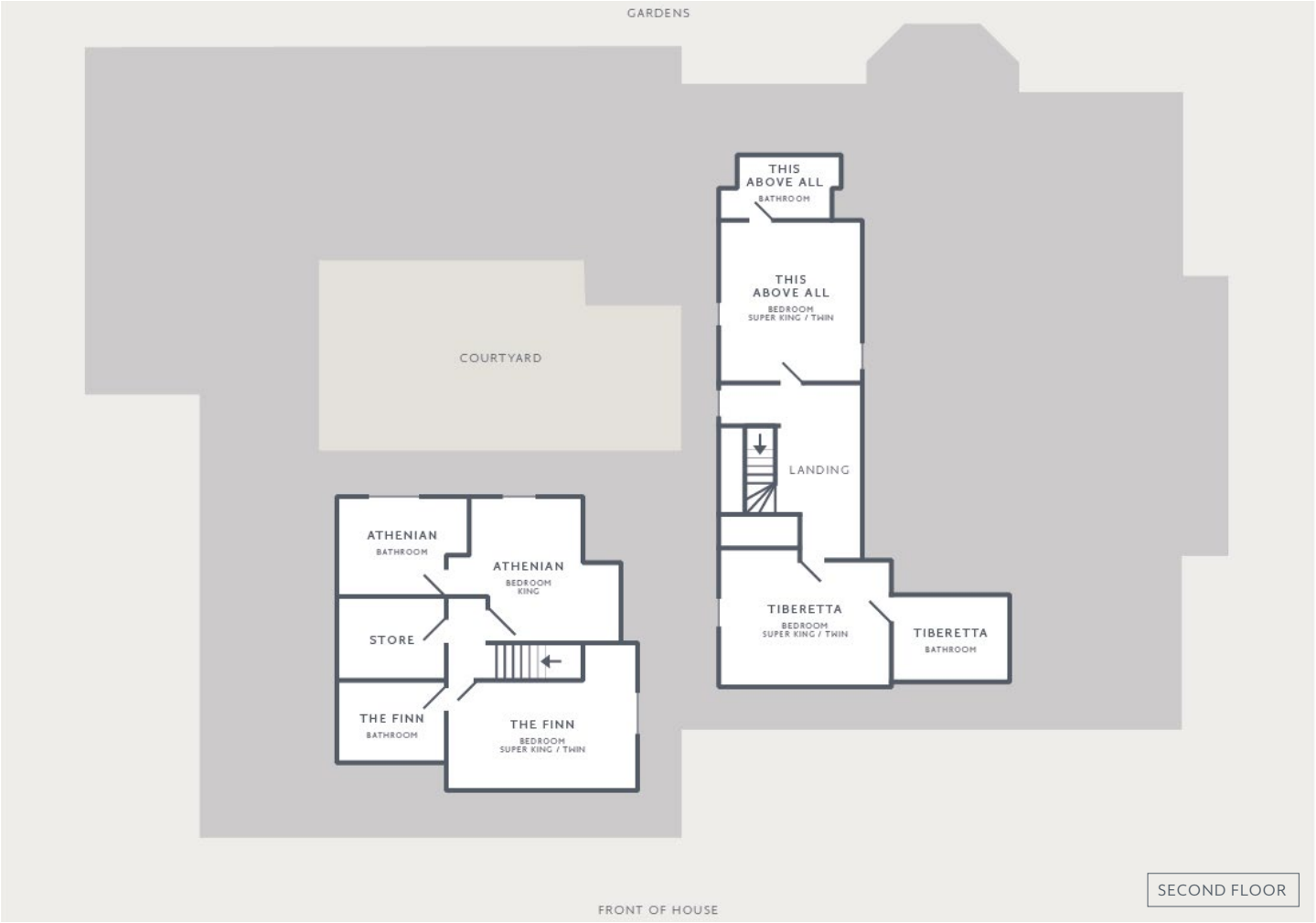
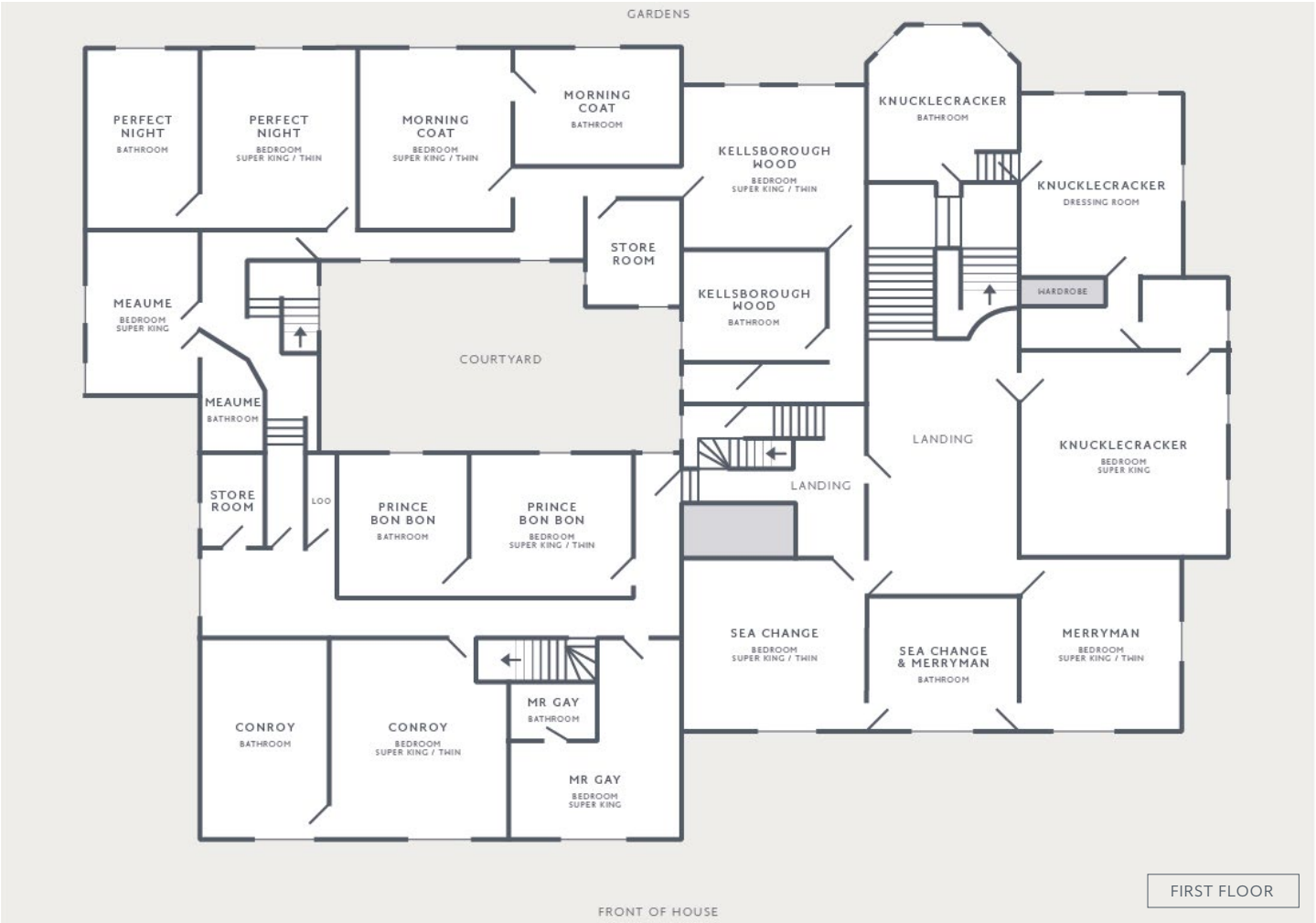
















Your  
Perfect  
Day

## CHURCH

We are conveniently located directly opposite the charming village church, which seats up to 120 guests. The church is dedicated to St John the Baptist and is believed to date back to the 13th Century.











## FOOD

At Thorpe Manor, food is at the heart of making your time here come to life. Indulgence Boutique, our Food team, will cater for all your needs during your stay.

Local, fresh and exciting produce are used to create unique and impressive menus. With a lifetime of experience at their fingertips, our chefs and food creators have worked to the highest levels of hospitality and hold a sharp understanding of food trends.

## DRINK

Our wine list has been carefully curated with taste, variety and quality at the forefront. Please enquire for details. Your evening bar will be arranged through our catering team.

## DINNERS AND RECEPTIONS

Dining Room – 30 guests, seated, banquet style.

Drawing Room – up to 50 guests, seated, round or trestle tables.

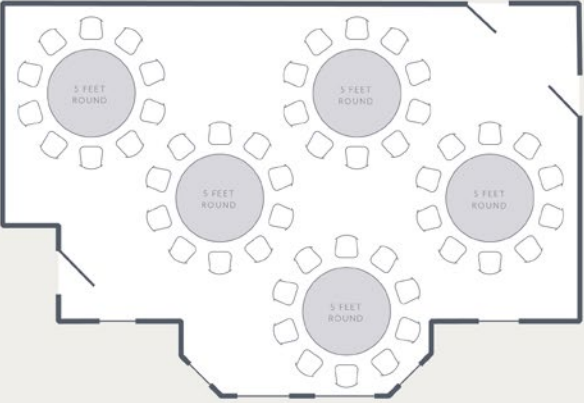
The Entrance Hall – up to 50 guests, drinks reception.

See next pages for table arrangement options in the Drawing and Dining Rooms

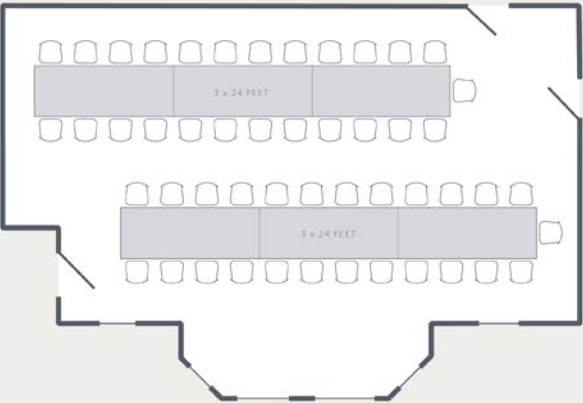


DRAWING ROOM

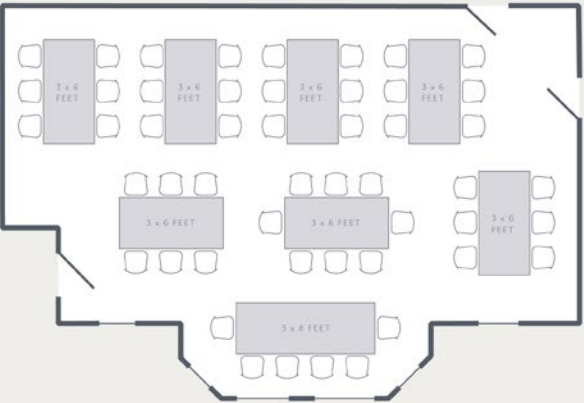
SEATING PLAN 1  
50 PEOPLE



SEATING PLAN 2  
50 PEOPLE



SEATING PLAN 3  
50 PEOPLE

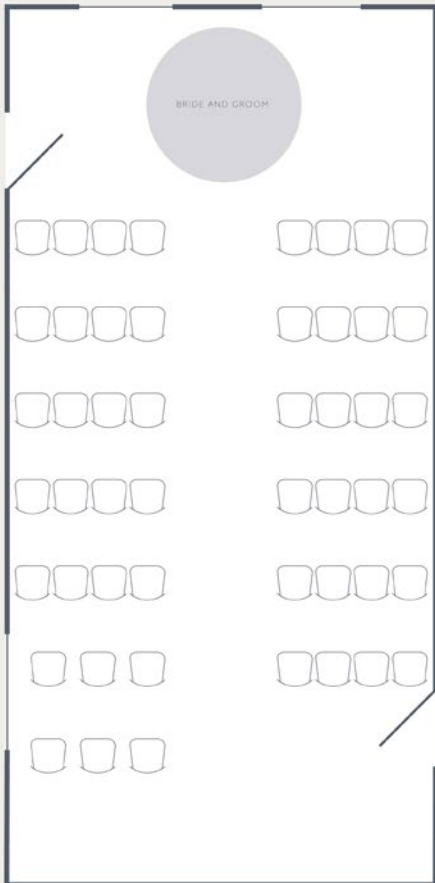




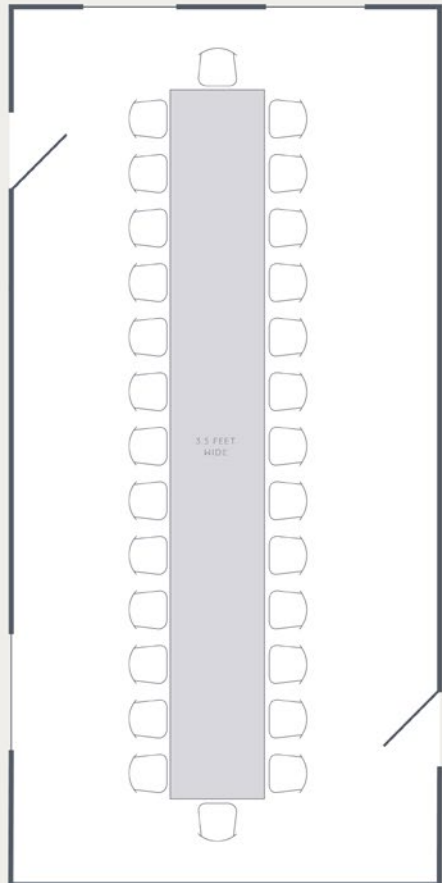


DINING ROOM

SEATING PLAN 1  
50 PEOPLE



SEATING PLAN 2  
28 PEOPLE



## MUSIC

Music permitted until midnight.

Bands and DJ's are welcome. We also have a baby grand piano in the main entrance hallway you are welcome to use.

## SUPPLIERS

We work with a range of companies and individuals that have been closely vetted by us. These talented people and teams can create your wedding to exactly your requirements and concepts.

Please see our suppliers list for more details.











## ACTIVITES AT THE HOUSE

Wine Tasting by Château Leoubé

Cooking Classes in the Kitchen by our Head Chefs

Flower Arranging

Clay Shooting on the Estate

Silverstone Track Days and Events

Archery in the Gardens

Falconry in the Gardens

Local Walks

Yoga and Pilates Lessons

Personal Training Sessions

Beauty and Wellness Therapy



THORPE MANOR  
OXFORDSHIRE

14 BEDROOMS    13 BATHROOMS

ENTRANCE HALL    DRAWING ROOM    DINING ROOM

KITCHEN    BOOT ROOM    GYM    BAR ROOM

FLOWER ROOM    GAMES ROOM / STUDY    CINEMA

HOT TUB    SUMMERHOUSE    CROQUET LAWN

200 ACRES OF ESTATE LAND    IN HOUSE SERVICES

THORPE MANOR APPROVED SUPPLIERS

For our House Wedding Plans please contact us directly.





THORPEMANORHOUSE.CO.UK