

WEDDINGS



THORPE MANOR
OXFORDSHIRE



Plan your perfect wedding celebrations at
Thorpe Manor, a Georgian manor house
surrounded by the natural beauty of its
200 acre estate, with 14 en suite bedrooms,
cinema, gym, bar, hot-tub, drawing room,
dining room, flower room, summerhouse,
orchard and lawns for marquees.









The House

ACCOMMODATION

14 bedrooms and 13 bathrooms in which to relax and unwind.

From cosy attic rooms under the eaves to generously spaced masters, all complete with free standing baths and rainforest showers. You and your guests will collapse into magnificent beds and wake to tranquil views.

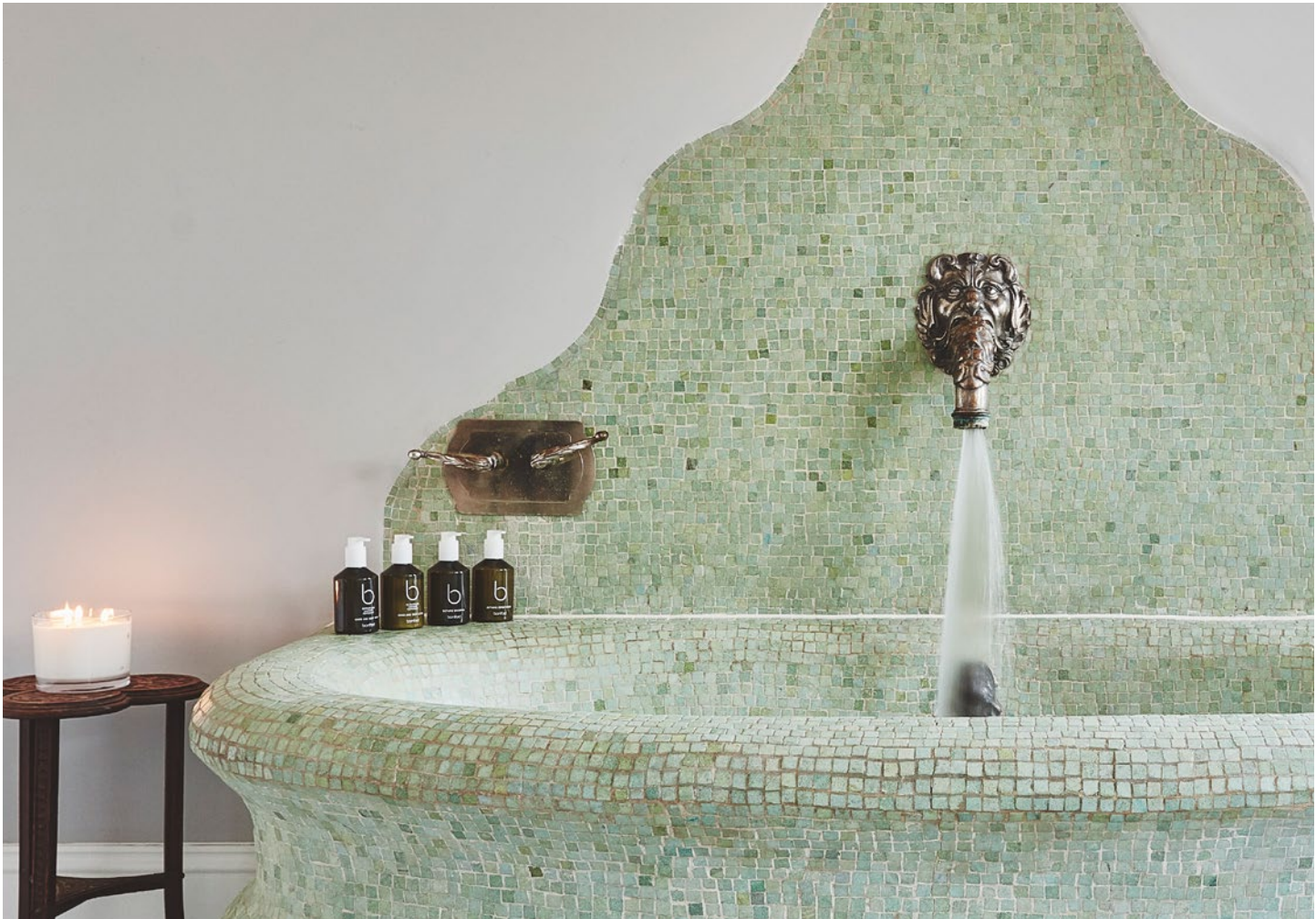
Each bedroom is equipped with modern comforts, such as Nespresso machines, large robes, slippers and 100% Egyptian cotton bed linen.

THE BRIDAL SUITE

The idyllic bridal suite, with its vast bed, one-of-a-kind antique mosaic bath, grand dressing room and views over the gardens, is what wedding dreams are made of.

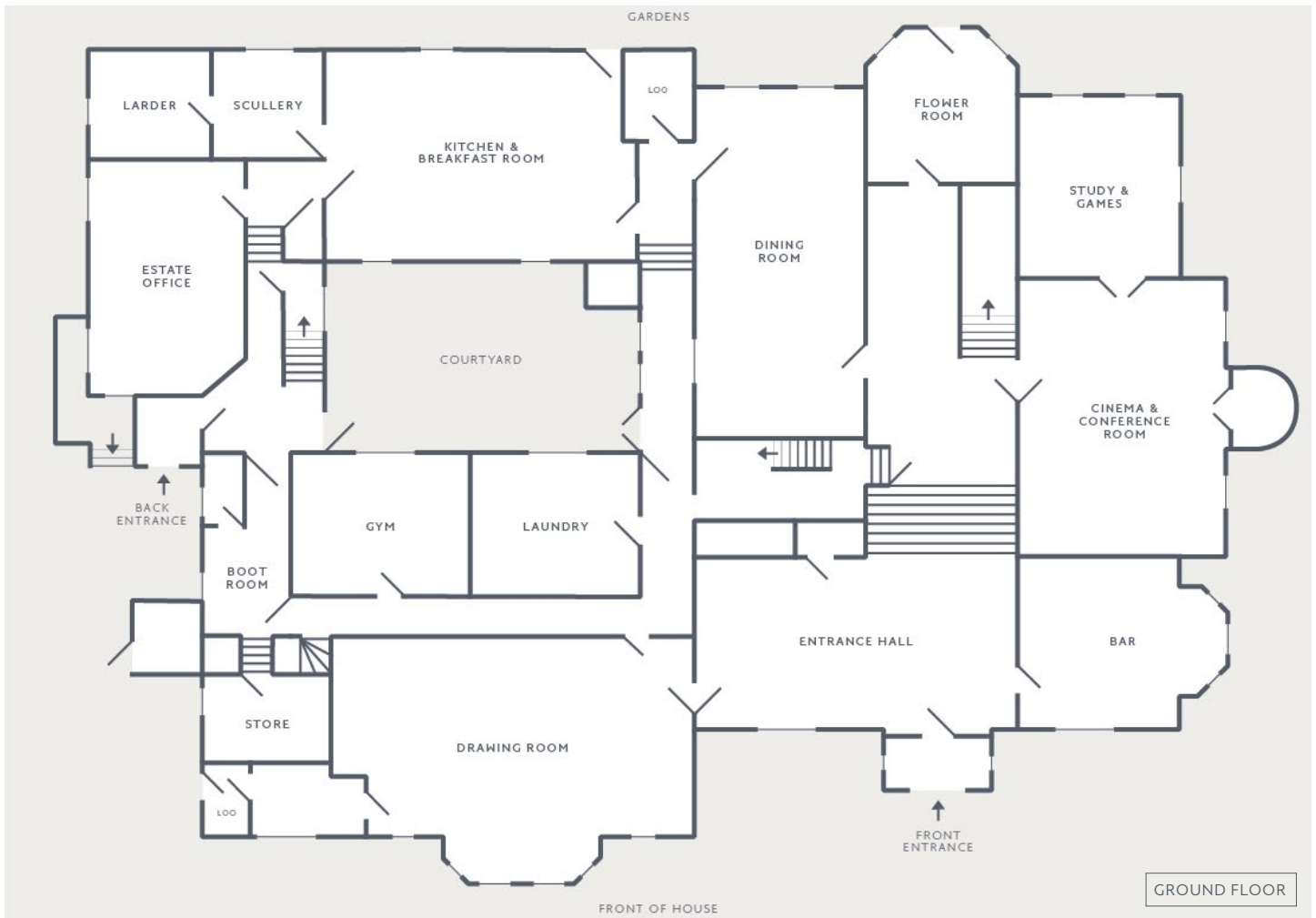
THE BUTLERS

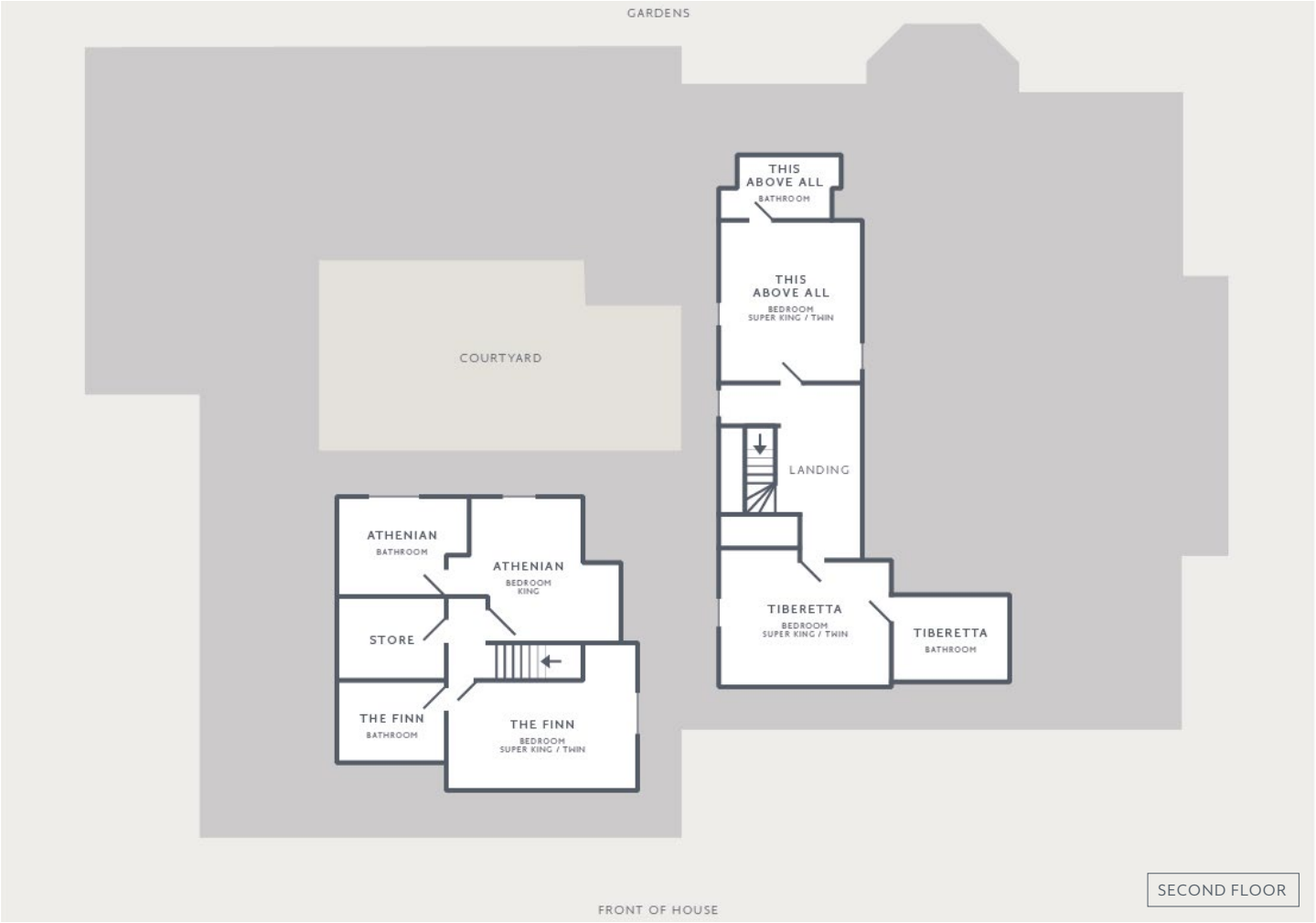
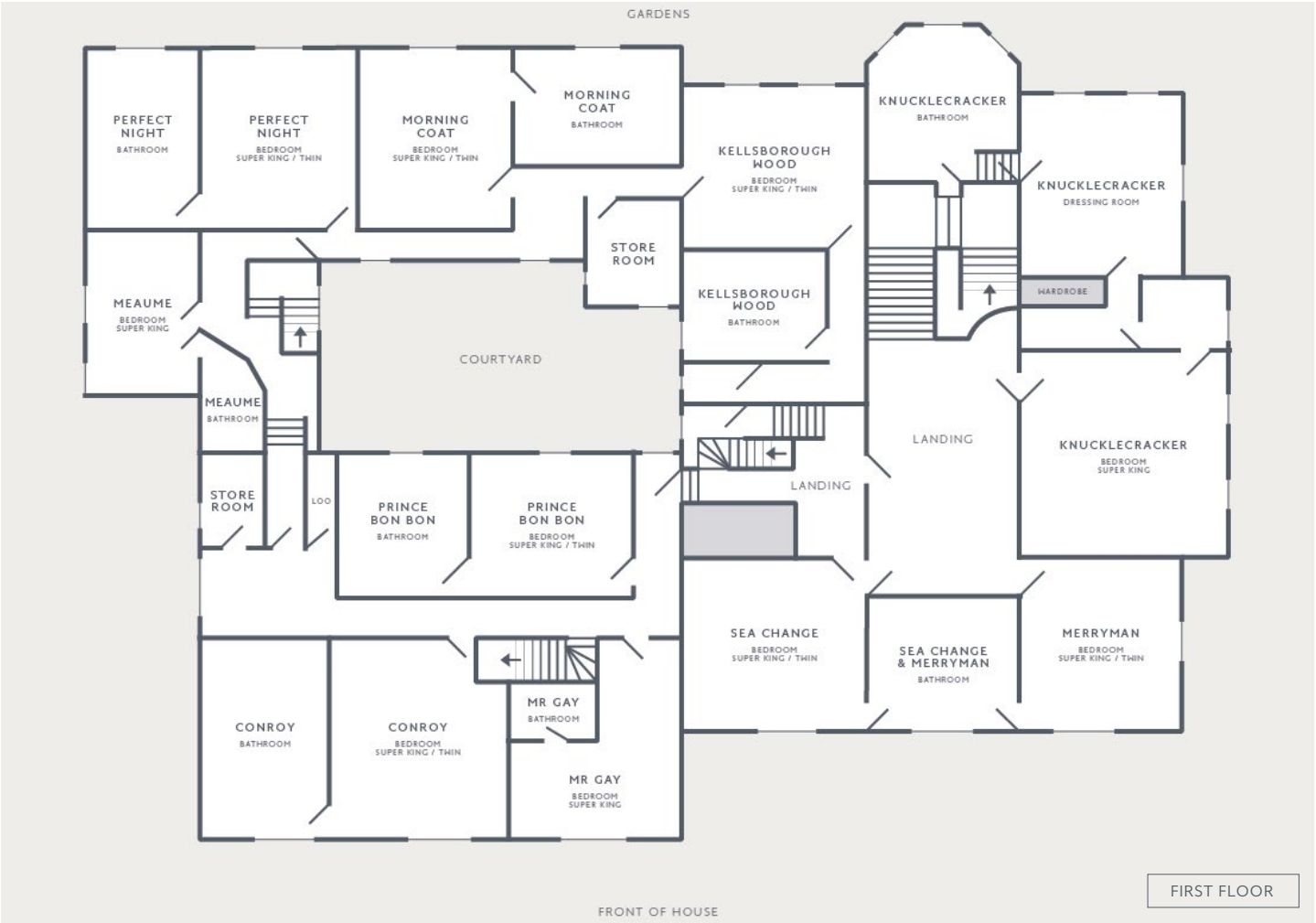
You and your guests will be looked after from the moment you arrive. Our Butlers work seamlessly and discreetly to ensure your stay is effortless.













Your
Perfect
Day

CHURCH

We are conveniently located directly opposite the charming village church, which seats up to 120 guests. The church is dedicated to St John the Baptist and is believed to date back to the 13th Century.





DRINKING

We offer a no corkage fee on wine and champagne that you wish to serve in your marquee on your wedding day. All other alcohol for all other times is supplied by us.

DINNERS AND RECEPTIONS

Dining Room – 30 guests, seated, banquet style.

Drawing Room – 62 guests, seated, round tables.

Main Entrance Hall – 100 guests, drinks reception.

Marquees and Outdoor Structures – 150 guests, seated.

See next pages for table arrangement options in the Drawing and Dining Rooms.

FOOD

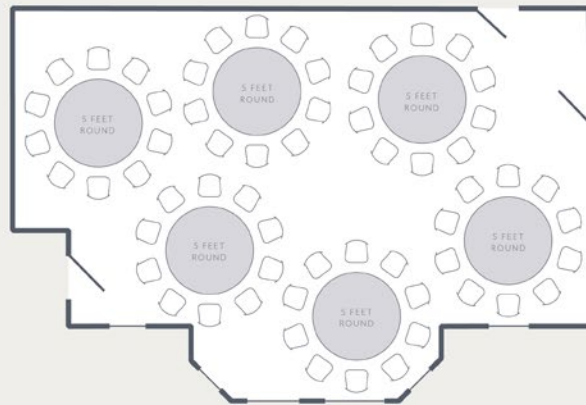
At Thorpe Manor, food is at the heart of making your time here come to life. Indulgence Boutique, our Food team, will cater for all your needs during your stay.

Local, fresh and exciting produce are used to create unique and impressive menus. With a lifetime of experience at their fingertips, our chefs and food creators have worked to the highest levels of hospitality and hold a sharp understanding of food trends.

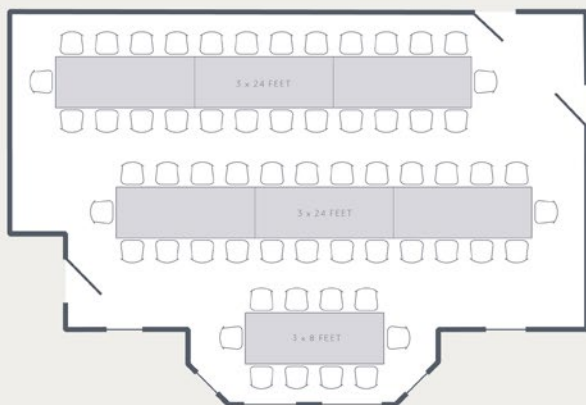


DRAWING ROOM

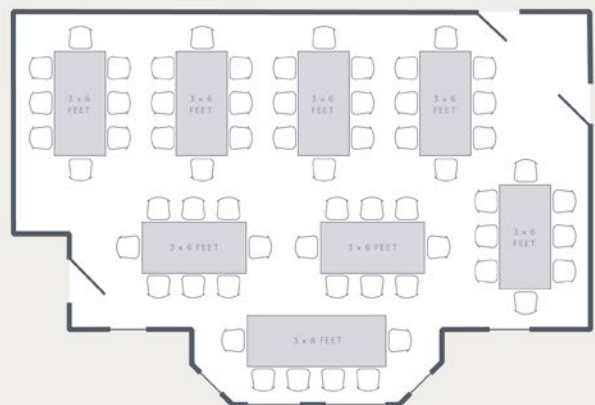
SEATING PLAN 1
60 PEOPLE



SEATING PLAN 2
62 PEOPLE



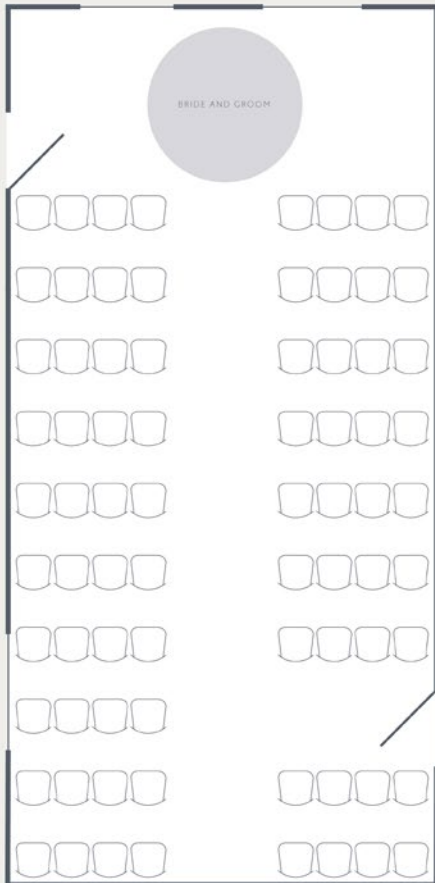
SEATING PLAN 3
62 PEOPLE



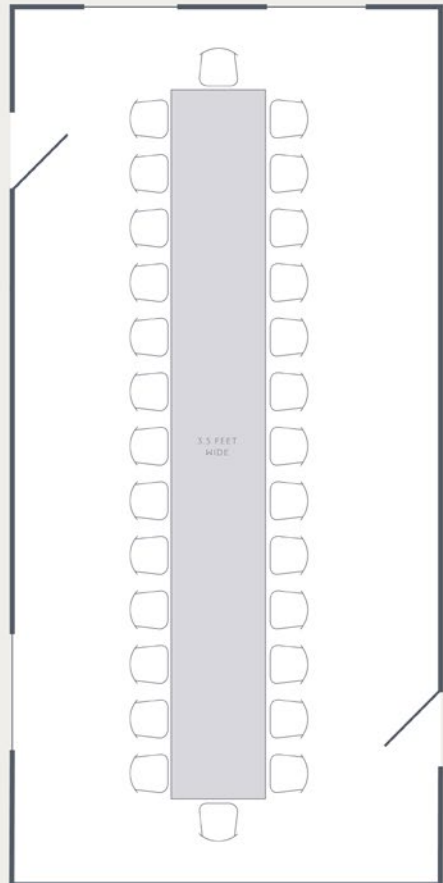


DINING ROOM

SEATING PLAN 1
76 PEOPLE



SEATING PLAN 2
28 PEOPLE



GROUNDS AND MARQUEES

There are several lawns for marquees or outside structures to be assembled. We have a 63amp 3 phase power supply installed.

MUSIC

Music and parties are permitted until midnight.

Bands and DJ's are welcome. We also have a baby grand piano in the main entrance hallway available for drinks receptions and dinners.

SUPPLIERS

We work with a range of companies and individuals that have been vetted by us. These talented people can create your wedding to exactly your requirements and concepts.

Please see our suppliers list for more details.





ACTIVITES AT THE HOUSE

Wine Tasting by Château Leoubé

Cooking Classes in the Kitchen by our Head Chefs

Flower Arranging

Clay Shooting on the Estate

Silverstone Track Days and Events

Archery in the Gardens

Falconry in the Gardens

Local Walks

Yoga and Pilates Lessons

Personal Training Sessions

Beauty and Wellness Therapy



THORPE MANOR
OXFORDSHIRE

14 BEDROOMS 13 BATHROOMS

ENTRANCE HALL DRAWING ROOM DINING ROOM

KITCHEN BOOT ROOM GYM BAR ROOM

FLOWER ROOM GAMES ROOM / STUDY CINEMA

HOT TUB SUMMERHOUSE CROQUET LAWN

200 ACRES OF ESTATE LAND IN HOUSE SERVICES

THORPE MANOR APPROVED SUPPLIERS

For our House Wedding Plans please contact us directly.



THORPEMANORHOUSE.CO.UK