

# CORPORATE EVENTS AND STAYS



THORPE MANOR  
OXFORDSHIRE







Privacy, luxury and seamless service  
are essentials to any business event.  
At Thorpe Manor, we are committed to  
delivering professionalism and success.

Retreat into the grand rooms of Thorpe Manor  
for privacy and time to focus on the matter  
at hand; corporate entertaining, private  
dinners, product launches, press parties,  
film screenings, creative brainstorming,  
team building and VIP meetings.











# The House

## ACCOMMODATION

14 bedrooms and 13 bathrooms in which to relax and unwind.

From cosy attic rooms under the eaves to generously spaced masters, all complete with free standing baths and rainforest showers. You and your guests will collapse into magnificent beds and wake to tranquil views.

Each bedroom is equipped with modern comforts, such as Nespresso machines, large robes, slippers and 100% Egyptian cotton bed linen.

## LOCATION

Thorpe Manor is conveniently located 10 minutes outside of Banbury.

Regular trains take 55 minutes from London Marylebone. By road, the house is within 30 minutes of The Cotswolds, 45 minutes of Birmingham, 1 hour from Heathrow and 1 hour 30 minutes of London.











## THE BAR

The elegant and intimate bar serves a menu of time-honoured classic cocktails, local award winning spirits and a special collection of wines.

The House Team will serve you drinks during your stay.

## FOOD

Food at Thorpe Manor reflects the abundant countryside surroundings, serving dishes that focus on fresh, local, vibrant and home-grown ingredients, and in a modern flair.

You can arrive to afternoon tea enjoy informal fire pit barbecues and feasts in the beautiful gardens, and spoil your guests with 5 course menus.

For menus and pricing bespoke to your stay at Thorpe Manor, please get in touch.

## SERVICE AND HOUSEKEEPING

Our House Team works seamlessly and discreetly to ensure life at Thorpe Manor is effortless. On hand for what you need. From welcoming guests and escorting to bedrooms, to pairing wines and shaking a cocktail.

## GYM

A boutique gym for those looking to keep active and maintain regimes whilst away. Running maps can be found for those called by the great outdoors. Our House recommended Personal Trainers can be arranged.

## CONFERENCE AND CINEMA ROOM

Whether for film screenings or presentations, this original oak paneled room provides an immersive environment in order to withdraw from distractions.

## STUDY AND GAMES ROOM

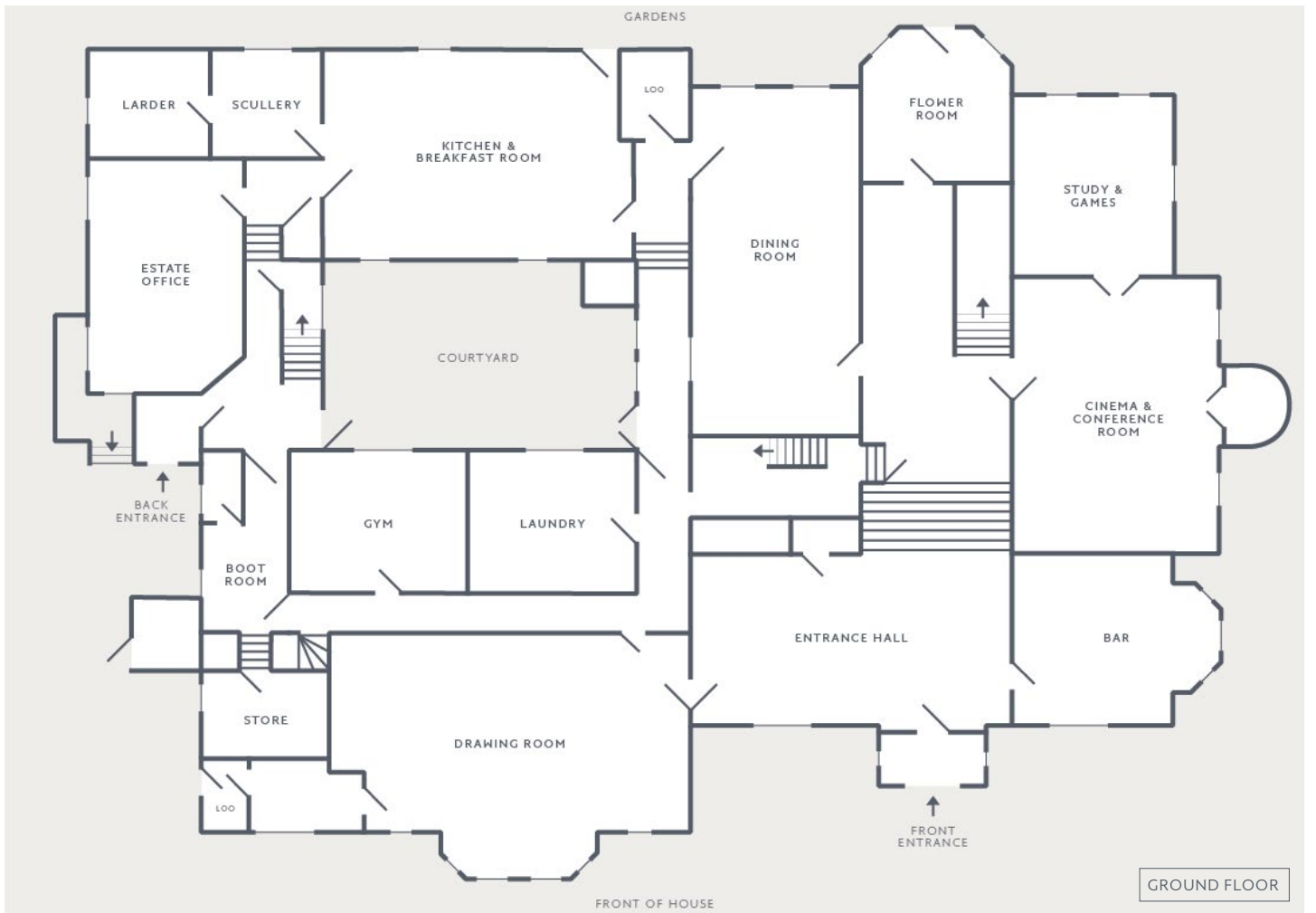
For work or play. We can transform the pool table into an office table and vice versa, depending on whether you need to type, write or shoot the cue.



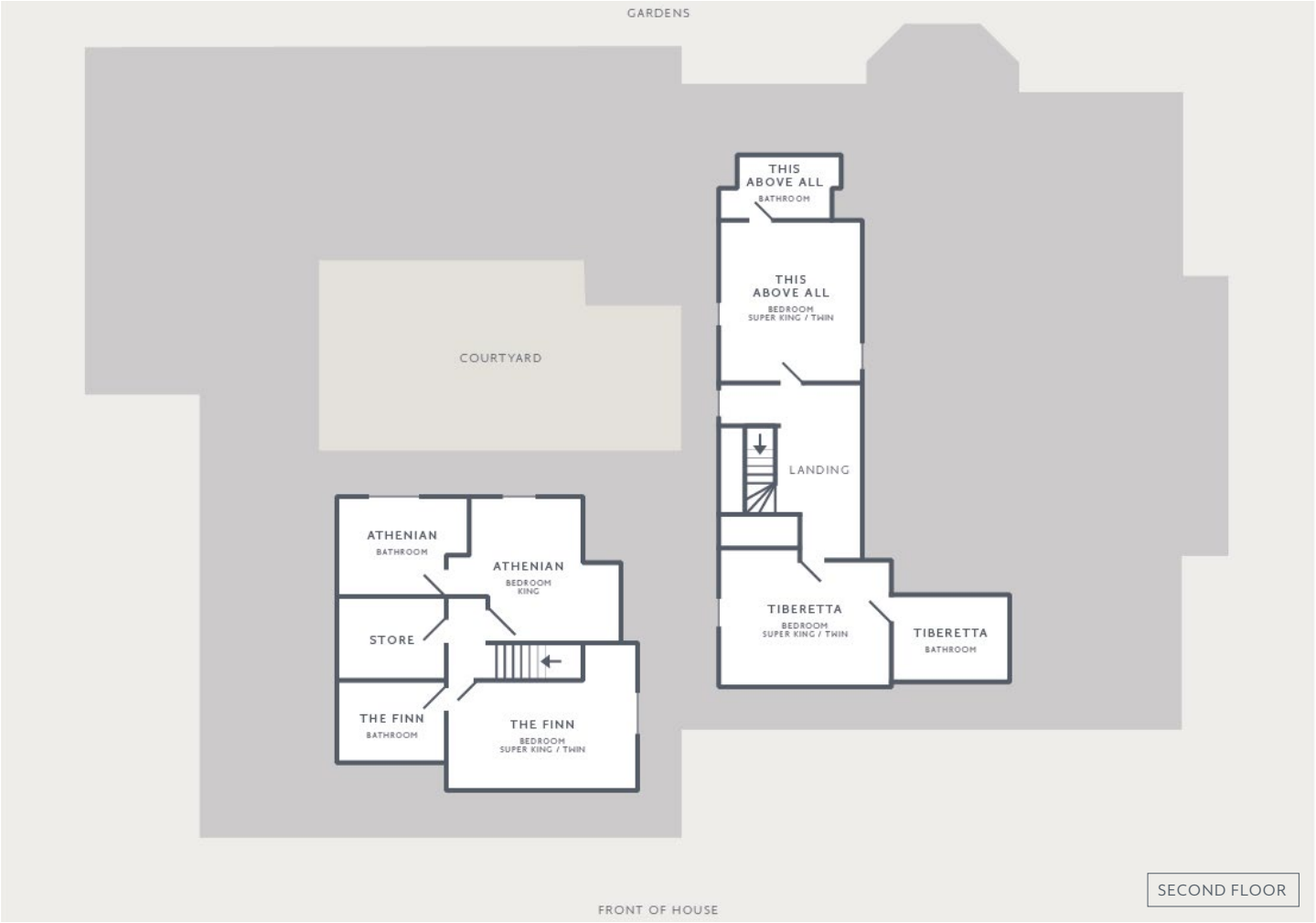
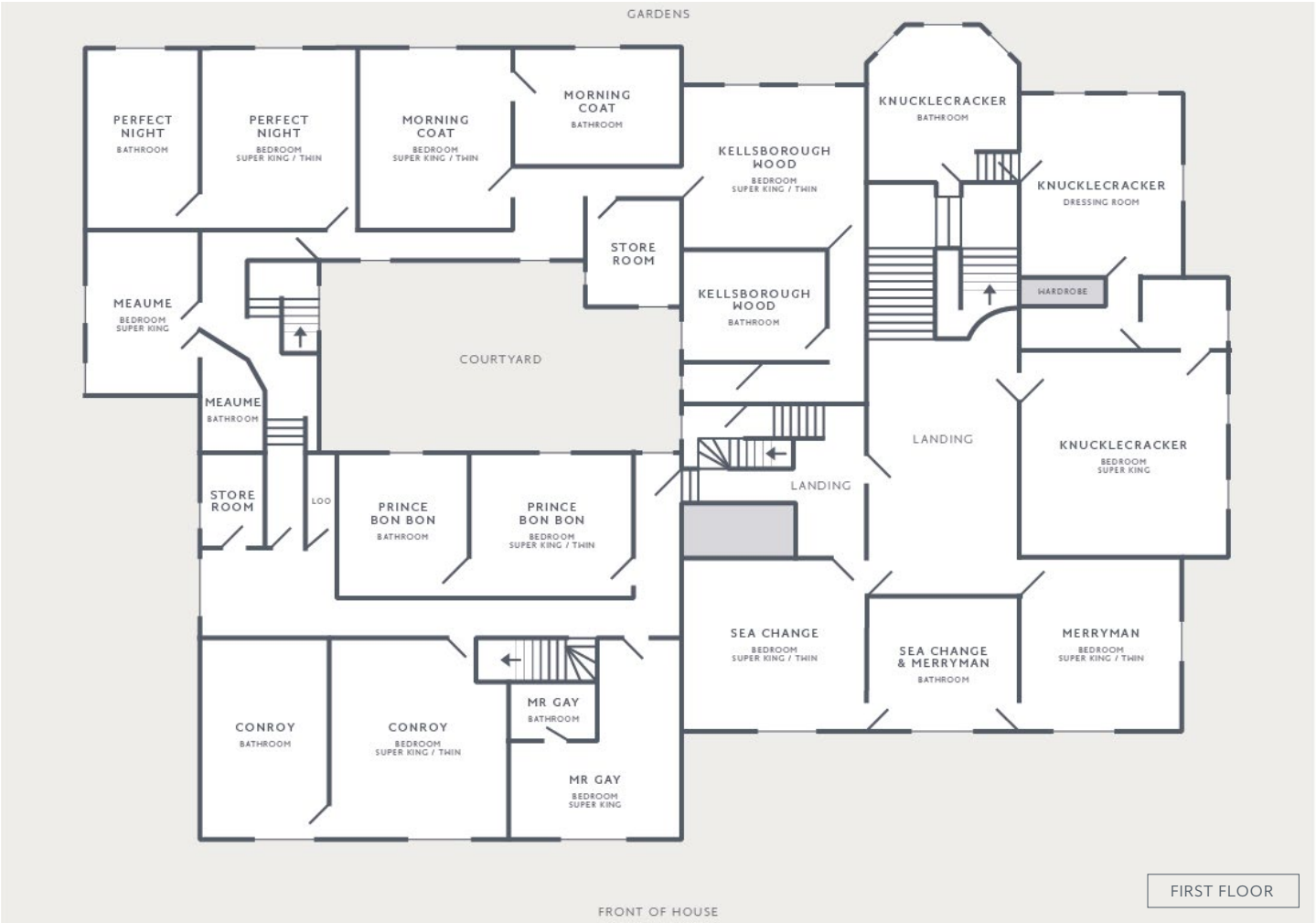


20  
CENTURY  
FOX













Your  
Event

## DINNERS AND RECEPTIONS

Main Entrance Hall – up to 120 guests for standing receptions.

Marquees and Outdoor Structures – up to 200 guests, seated.

Drawing Room – up to 62 guests, seated.

Dining Room – 30 guests, seated, banquet style.

Cinema – up to 20 guests as a conference room,  
horseshoe configuration.

Outside – up to 40 guests, casual configuration.

– up to 20 guests, banquet style.

– up to 200 guests in a marquee.

See next pages for table arrangement options in the Drawing and Dining Rooms.



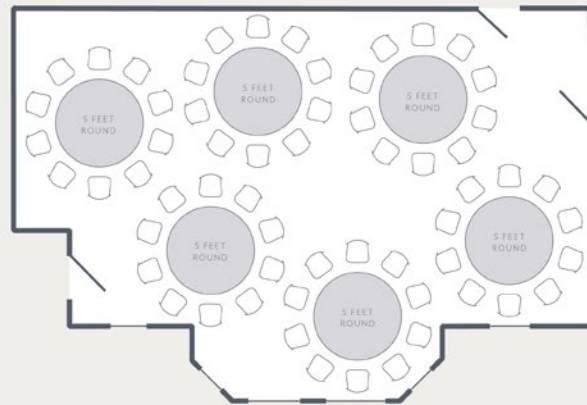




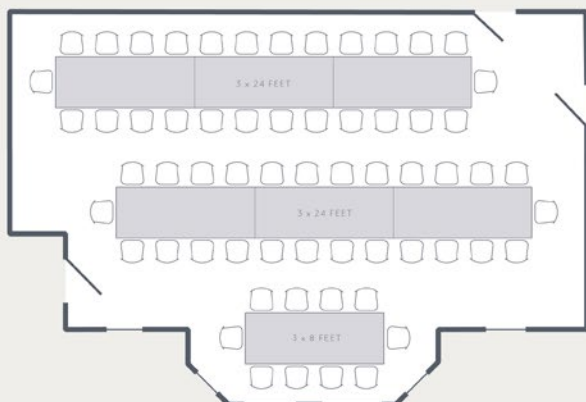


# DRAWING ROOM

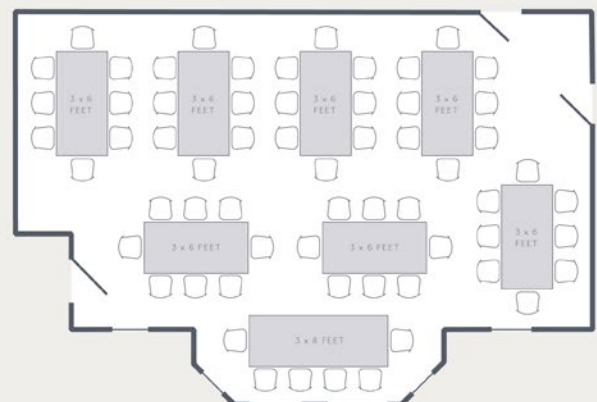
SEATING PLAN 1  
60 PEOPLE



SEATING PLAN 2  
62 PEOPLE



SEATING PLAN 3  
62 PEOPLE

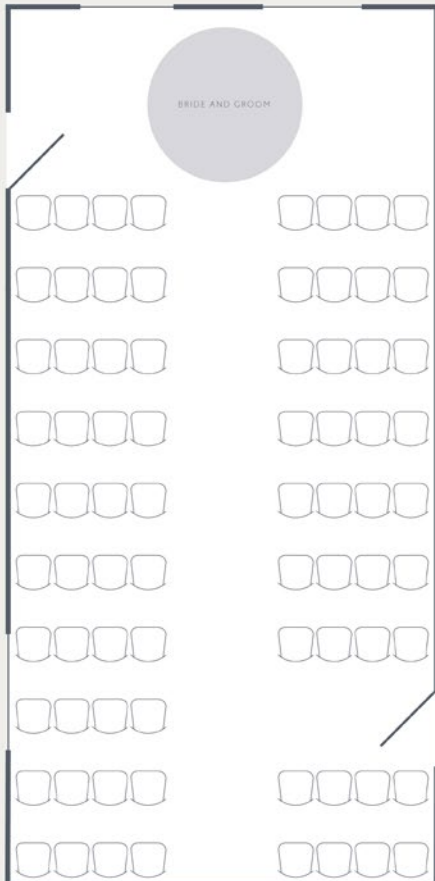




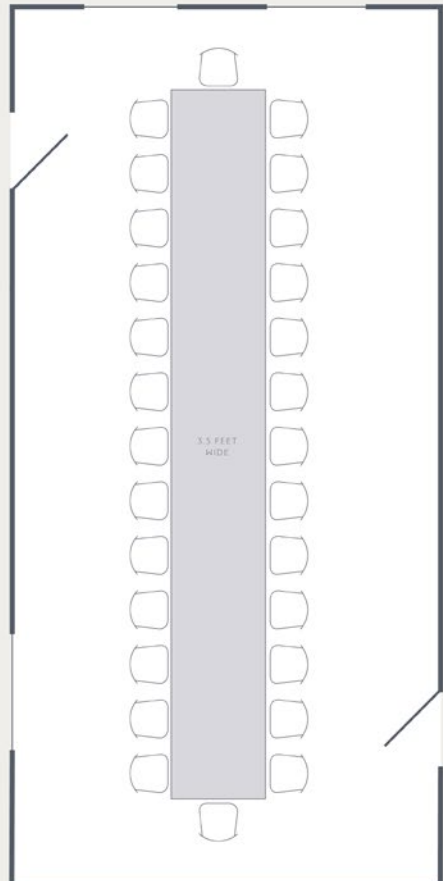


DINING ROOM

SEATING PLAN 1  
76 PEOPLE



SEATING PLAN 2  
28 PEOPLE







## GROUNDS AND MARQUEES

There are several lawns for marquees or outside structures to be assembled. We have a 63amp 3 phase power supply installed.

## MUSIC

Music and parties are permitted until midnight.

Bands and DJ's require our prior consent.  
We also have a baby grand piano in the main entrance hallway available for drinks receptions and dinners.

## SUPPLIERS

We work with a range of companies and individuals that have been vetted by us. These talented people can create your wedding to exactly your requirements and concepts.

Please see our suppliers list for more details.

## SUGGESTED ACTIVITIES

Silverstone track days

Wine tastings with Chateau Leoube

Whiskey tastings with Cotswold Distillery

Cooking Lessons

Flower arranging classes

Christmas wreath making

Sugar craft lessons

Walks

Falconry

Ferret racing

Clay shooting

Archery

Personal training

Yoga

Pilates

Massage and spa treatments

Beauty treatments











## ADVENTURE IN THE LOCAL AREA

### **Tanks Alot** (4 miles)

Britain's biggest military tank driving experience school. Offering various day courses which include heavy armour tanks, ATVs, clay pigeon shooting, armoury tours, survival training and firing 17th Century weapons.

### **Banbury Tennis Club** (7 miles)

Our local tennis courts. Lessons can be arranged.

### **Honesberie Shooting School** (10 miles)

Learn to shoot or improve your skills at this highly respected school.

### **Silverstone** (11 miles)

The home of British motor racing. Various track days available.

### **The National Car Museum** (16 miles)

The world's largest collection of historic British cars.

### **Towcester Racecourse** (16 miles)

The top Horse and Greyhound Racing course in the area.

### **Bicester Village** (20 miles)

VIP Shopping at the World famous designer outlet.

### **The Royal Shakespeare Theatre** (30 miles)

The Royal Shakespeare Theatre is a 1,040+ seat thrust stage theatre owned by the Royal Shakespeare Company dedicated to the English playwright and poet William Shakespeare.

### **Cheltenham Racecourse** (45 miles)

Home of the Gold Cup the best jumping in the world.



THORPE MANOR  
OXFORDSHIRE

14 BEDROOMS    13 BATHROOMS

ENTRANCE HALL    DRAWING ROOM    DINING ROOM

KITCHEN    BOOT ROOM    GYM    BAR ROOM

FLOWER ROOM    GAMES ROOM / STUDY    CINEMA

HOT TUB    SUMMERHOUSE    CROQUET LAWN

200 ACRES OF ESTATE LAND    IN HOUSE SERVICES

THORPE MANOR APPROVED SUPPLIERS

Please get in touch for pricing and any further information.





THORPEMANORHOUSE.CO.UK